



British Wool – Sale Report

BW196 – 11th February 2025



KEY METRICS

Index	1.625	Total weight offered:	1,254 tonnes
Average clean price:	£1.559 per kg	Total weight sold	1,197 tonnes
Average greasy price	£1.037 per kg	Clearance	95.4%

SALE REPORT

The British Wool sale on the 11th February saw slightly weaker demand than in recent auctions resulting in prices decreasing by 0.6% sale on sale. White wools were still keenly sought after with these grades at least firm with some nudging a little dearer. Competition on some of the Mule types was limited resulting in some grades falling by 2%, bidding on poorer colour types was also more selective with these selling between buyers favour to 2% cheaper. All Mountain wool types sold at similar levels to BW195. The average greasy price was affected by the mix of grades within the offer and no high value/speciality lots.

Despite a little less intensity in the bidding the auction still achieved a near full clearance of the offering.

Wool type	Weight sold (Tonnes)	Clearance	Price change
Fine	115	93%	Hoggs 2 – firm, Ewes 1 – 3% dearer, Ewes 2 – firm. Lt Grey – sellers favour.
Medium	232	96%	Hoggs 1 – 5% dearer, Hoggs 2 – buyers favour, Ewes 1 – buyers favour, Ewes 2 – firm, Discoloured – 2% Dearer, Lt Grey – 1% Dearer.
Romney	70	100%	Ewes 1 – firm, Ewes 2 – 2.5% cheaper.
Mule	300	97%	Hoggs 1 – firm to 2% cheaper, Hoggs 2 – firm, Ewes 1 – up to 2% cheaper, Ewes 2 – firm to 2.5% cheaper, All Cott Grades – 1 to 2.5% cheaper, Lt Grey – firm.
Lustre	0	0%	Blueface – unsold.
Cheviot	67	100%	Hoggs 1 – 1.5% dearer, Hoggs 2 – upto 2.5% dearer, Ewes 1 – fully firm, Ewes 2 – buyers favour.
Cheviot Cross	50	100%	Firm to 1.5% dearer.
Hill	25	100%	Medium – firm to buyers favour.
Blackface	100	100%	All grades fully firm.
Welsh Mountain	72	83%	No 1 – upto 2% cheaper, No 2 – Firm, Coloured Kempy – fully firm.
Swaledale	25	100%	No 1 – firm to buyers favour.
Lamb	59	100%	All Grades – firm.
Fault, Oddments	44	100%	Oddments – Fully firm.

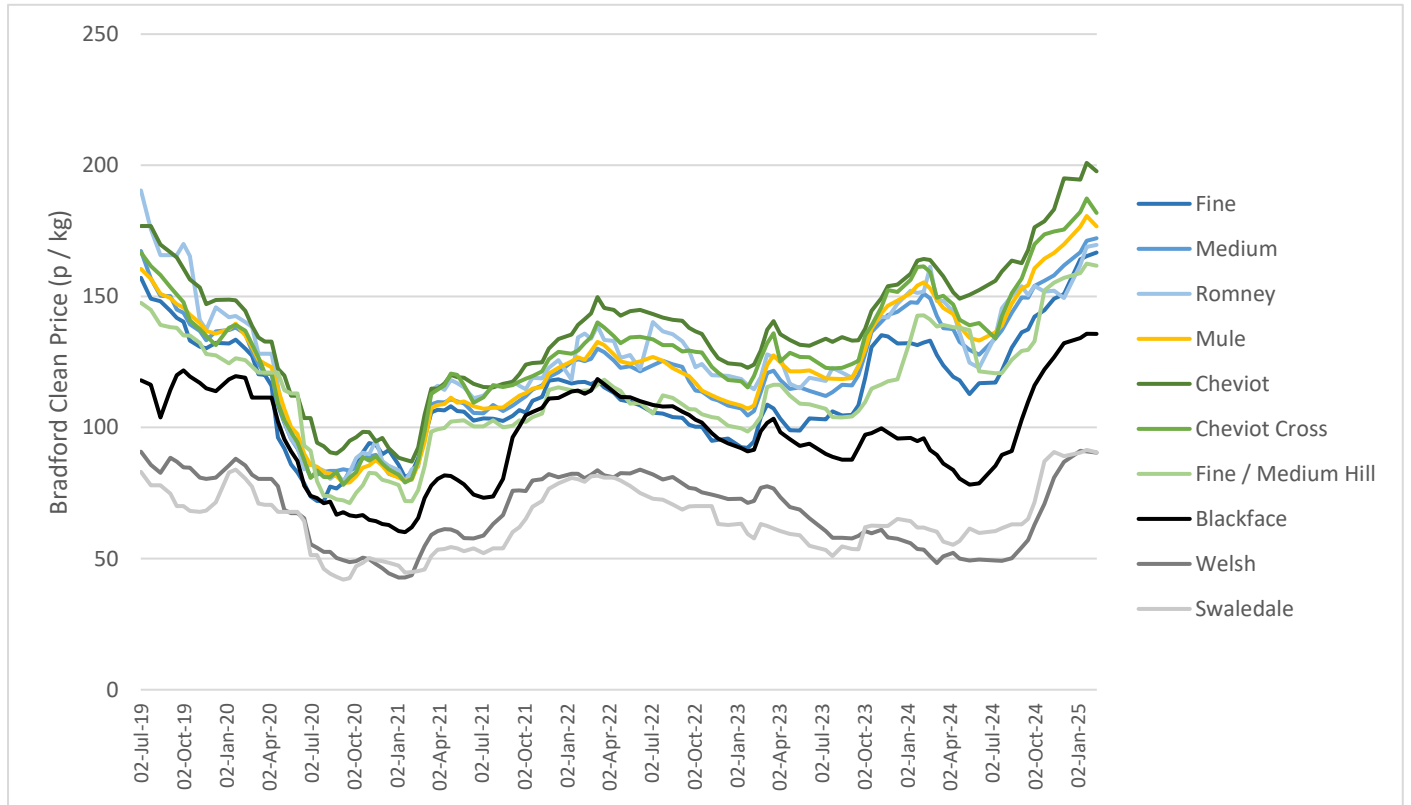


British Wool – Sale Report

BW196 – 11th February 2025



PRICE MOVEMENTS FOR KEY WOOL TYPES: JULY 2019 TO DATE



PRICE INDEX HISTORY: JULY 2015 TO DATE

